



IQS9320 Arduino Example Code



Table of Contents

Introduction	1
Arduino Code Configuration	2
Example Code Flow Diagram	3
SparkFun Board Library Installation	4
Serial Communication and Interface	7



Introduction

This Arduino example code demonstrates how to set up and use the IQS9320 Integrated Circuit (IC). The IQS9320 is a 20-channel inductive sensing device. This class provides an easy means of initializing and interacting with the IQS9320 device from an Arduino-based device.

This example code is specifically aimed at the IQS9320 Evaluation Kit (PCB number *AZP1342B1*).

This example code is intended for an Arduino Compatible board that uses 3.3 V logic, such as [Sparkfun's Pro Micro \(3.3V, 8 MHz\)](#). If a 5V logic Arduino board is used, a logic-level translator will be required between the Arduino-based board and the IQS9320.



Arduino Code Configuration

The behaviour and pin assignments of the Arduino code can be configured with the `#define` settings at the start of `iqs9320-example-code.ino`.

Change the following pin assignments and parameters to suit your hardware:

```
/** Defines */  
#define DEMO_IQS9320_ADDR          0x30  
#define DEMO_IQS9320_POWER_PIN    0  
#define DEMO_IQS9320_MCLR_PIN     2  
#define DEMO_IQS9320_NR_CHANNELS  20  
#define DEMO_IQS9320_SAMPLE_TIME  10
```

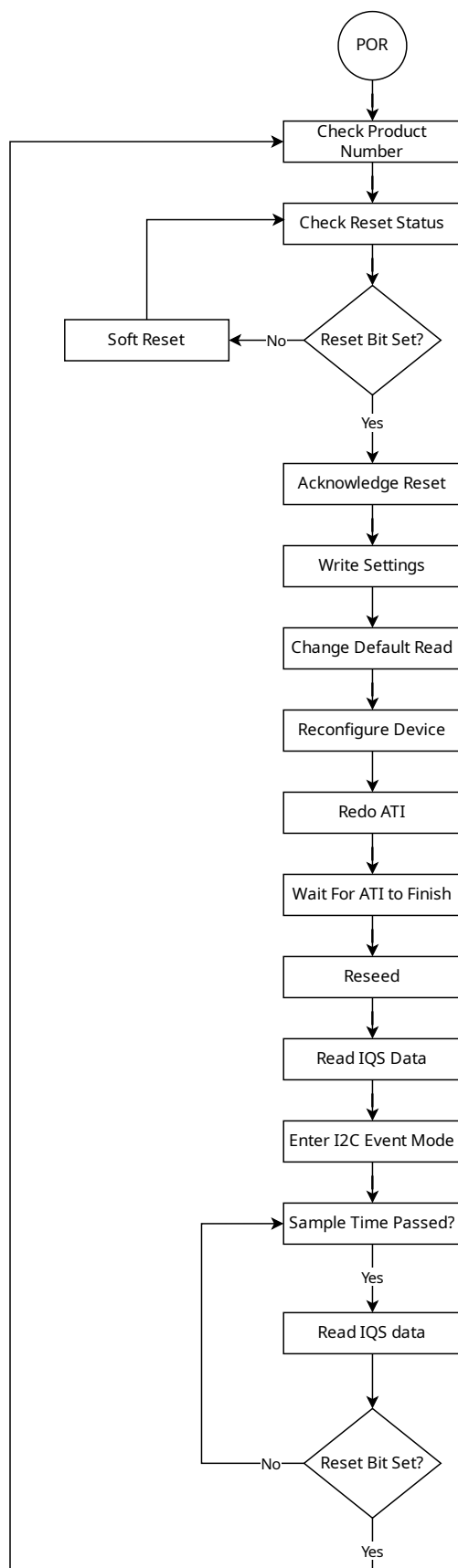
- `DEMO_IQS9320_ADDR` is the IQS9320 I2C Slave address. For more information, refer to the datasheet and application notes found on the [IQS9320 Product Page](#).
- `DEMO_IQS9320_POWER_PIN` can be used to power the IQS9320 directly from an Arduino GPIO. This parameter sets which pin to use. This is an optional setting and can be removed if the IQS9320 is powered from the VCC pin or an external power supply.
- `DEMO_IQS9320_MCLR_PIN` sets the pin assignment for the IQS9320 reset pin.
- `DEMO_IQS9320_NR_CHANNELS` is the total number of active channels on the IQS9320.
- `DEMO_IQS9320_SAMPLE_TIME` is the interval at which the IQS9320 is sampled.



Please note that powering an IQS device directly from a GPIO is *generally* not recommended. However, the `DEMO_IQS9320_POWER_PIN` in this example could be used as an enable input to a voltage regulator.



Example Code Flow Diagram





SparkFun Board Library Installation

To use the SparkFun Pro Micro, the SparkFun Board Library must be installed in the Arduino IDE.

Add the SparkFun Board Library by opening Preferences (**File > Preferences**), and paste the following URL into the "Additional Board Manager URLs" text box.

```
https://raw.githubusercontent.com/sparkfun/Arduino_Boards/master/IDE_Board_Manager/package_sparkfun_index.json
```

Preferences

Settings Network

Sketchbook location: c:\Azoteq\Arduino **BROWSE**

☐ Show files inside Sketches

Editor font size: 14

Interface scale: ☒ Automatic 100 %

Theme: Light (Arduino)

Language: English (Reload required)

Show verbose output during ☐ compile ☐ upload

Compiler warnings: None

☐ Verify code after upload

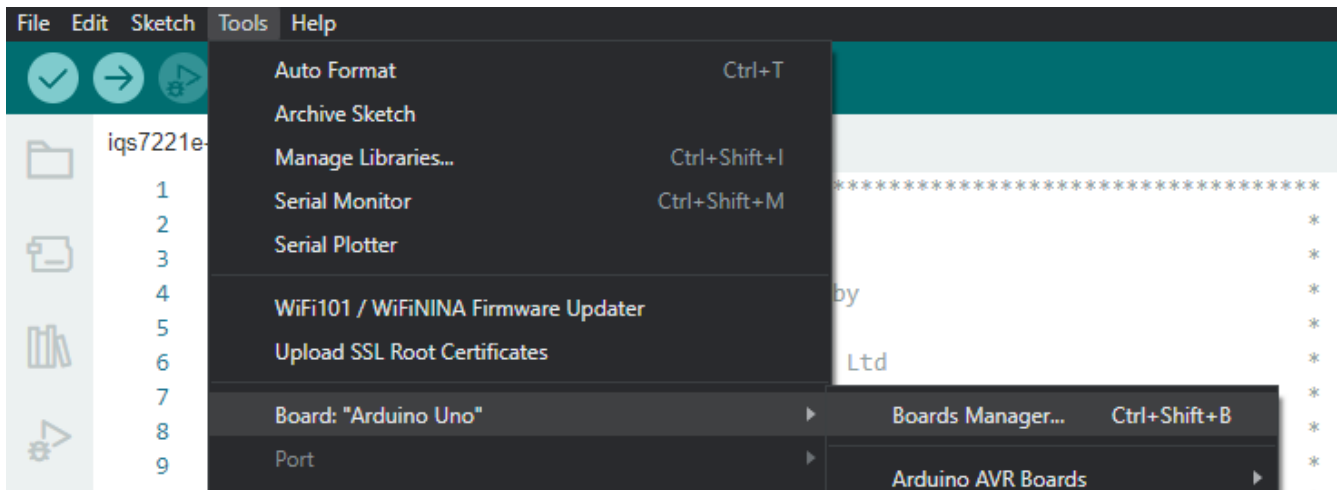
☒ Auto save

☐ Editor Quick Suggestions

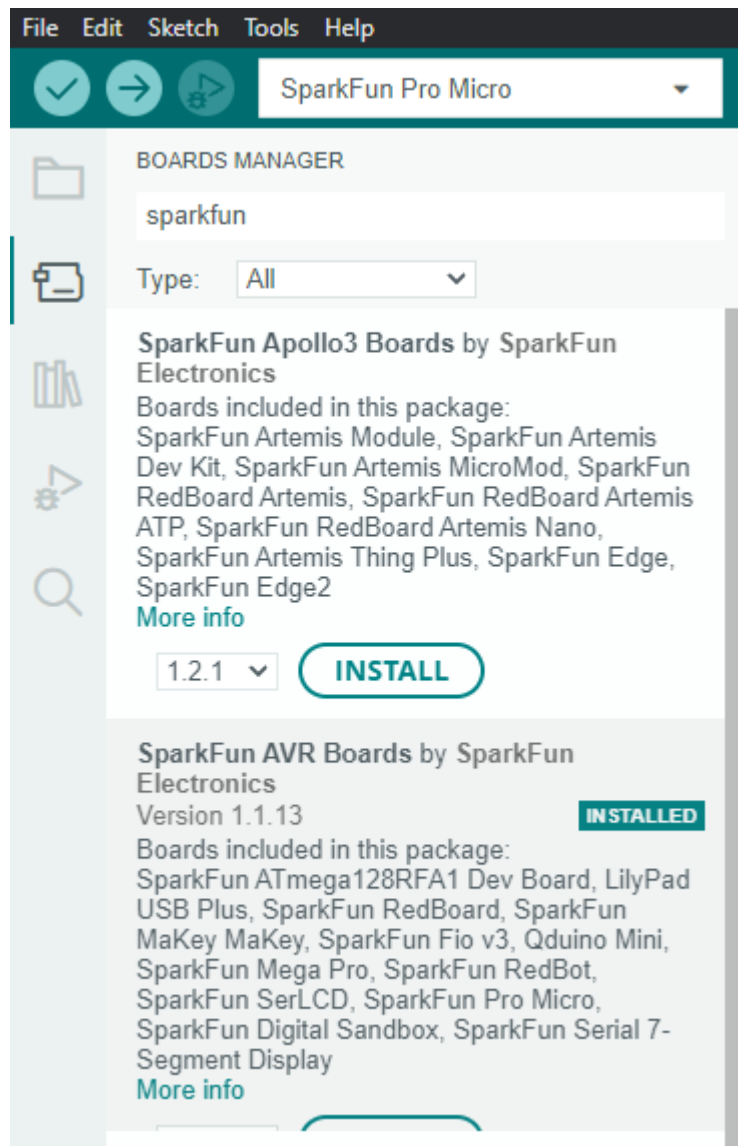
Additional boards manager URLs: https://raw.githubusercontent.com/sparkfun/Arduino_Boards/master/IDE_Board_ **+**

CANCEL **OK**

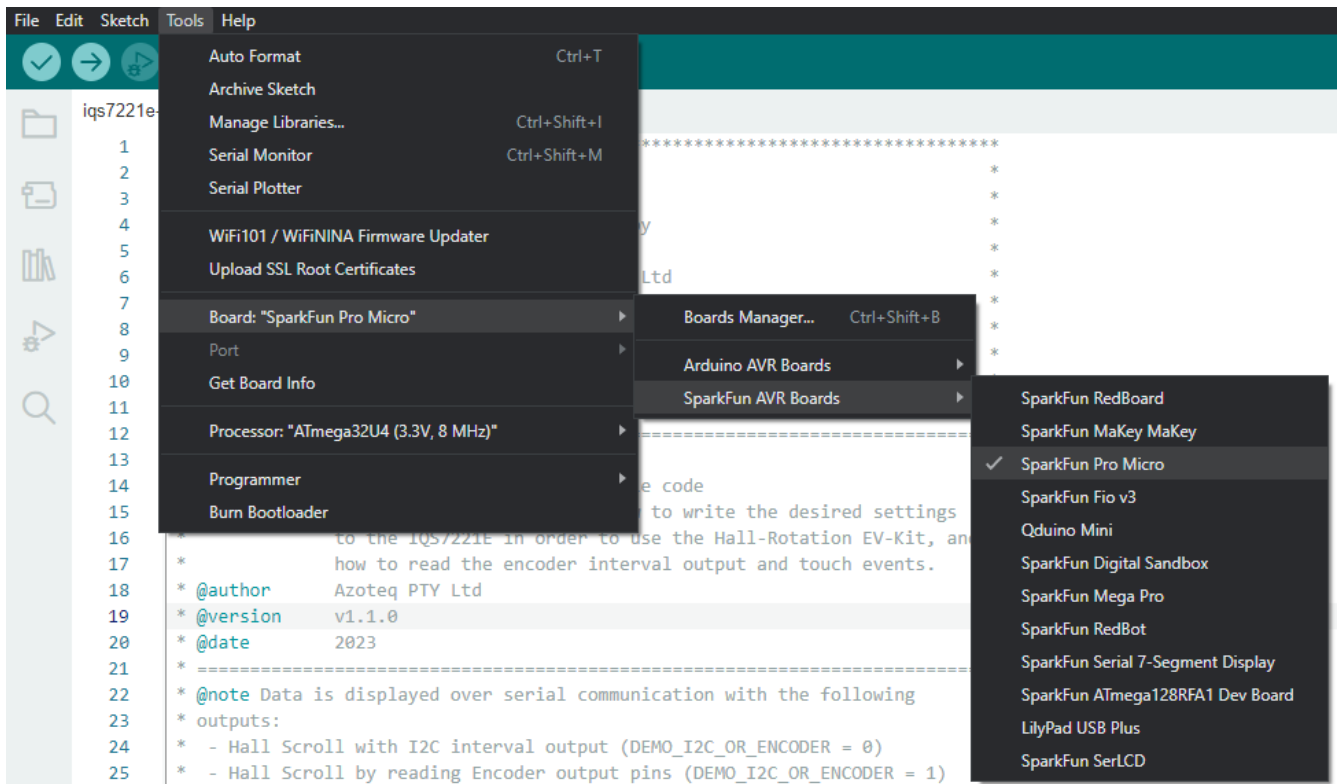
Click "OK". Then open the Board Manager under **Tools > Board > Boards Manager...**



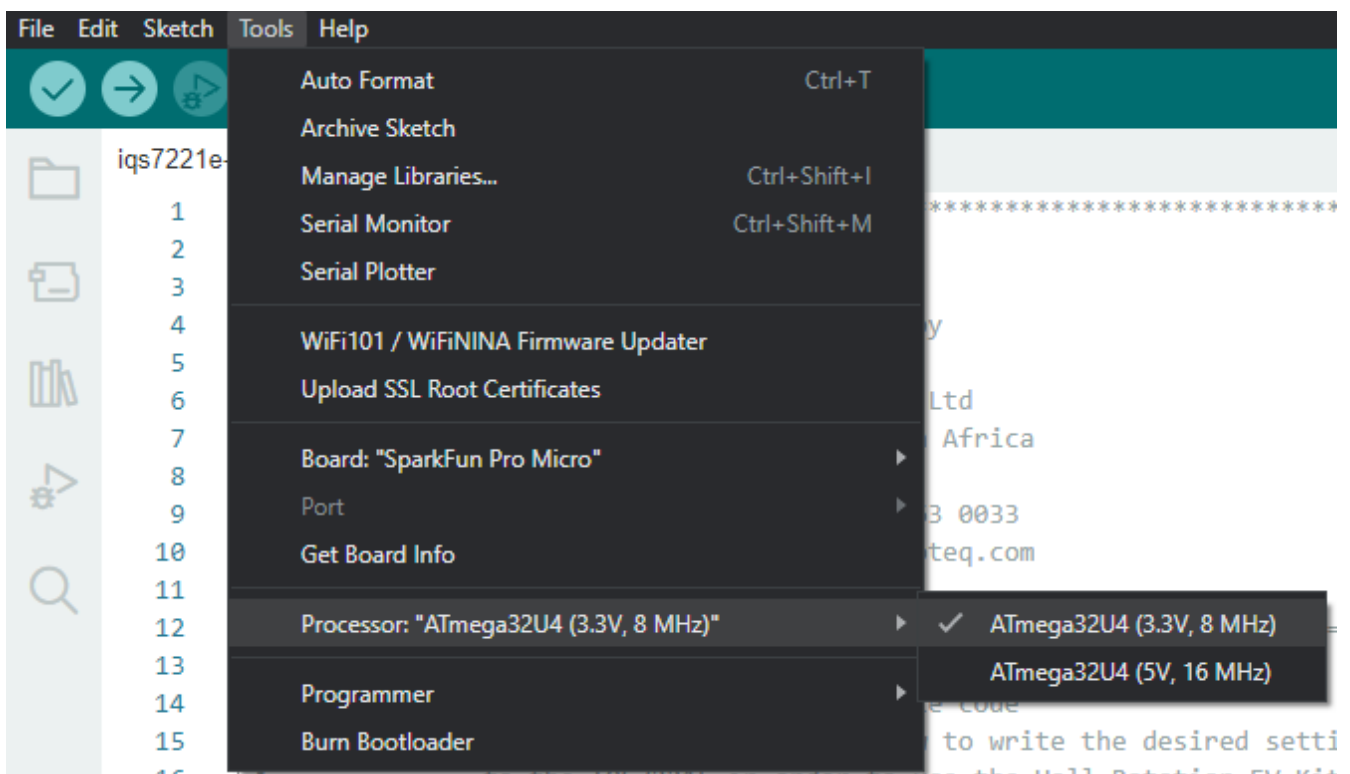
Search for "SparkFun", and install "SparkFun AVR Boards by SparkFun".



You can now select the "SparkFun Pro Micro" in the Board selection menu.



Also be sure to select the "3.3 V, 8 MHz" version under Tools > Processor.



Source: [Pro Micro Hookup Guide](#)



Serial Communication and Interface

The example code provides verbose serial feedback to aid users in the demonstration of start-up and operational functions. A successful initialization process will show the following over serial:

```
Monitor Mode Serial View Mode Text Port COM14 - USB Serial Device (COM14) Baud rate 115200 Line ending None Stop Monitoring
---- Opened the serial port COM14 ----
IQ59320 Ready
IQ59320_INIT_VERIFY_PRODUCT
    Product number is: 1814 v0.4
IQ59320_INIT_READ_RESET
    Reset event occurred.
IQ59320_INIT_ACK_RESET
IQ59320_INIT_UPDATE_SETTINGS
    1. Write Device Configuration
    2. Write Mirror Selection CH 0-9
    3. Write Mirror Selection CH 10-19
    4. Write Calibration Parameters CH 0-9
    5. Write Calibration Parameters CH 10-19
    6. Write Effective Max Delta CH 0-9
    7. Write Effective Max Delta CH 10-19
    8. Write Effective Max Delta CH 10-19
    9. Write Channel Select and Disable
    10. Write Rx Select
    11. Write Tx Select
    12. Write ATI Target and Band
    13. Write Thresholds
    14. Write Filter Values
    15. Write Reference Halt Timeout
    16. Write Activation Hysteresis
IQ59320_INIT_DEFAULT_READ_SYS_STATUS
IQ59320_INIT_RECONFIG_DEV
IQ59320_INIT_ATI
IQ59320_INIT_WAIT_FOR_ATI
    DONE
IQ59320_INIT_RESEED
IQ59320_INIT_READ_DATA
IQ59320_INIT_DONE

IQ59320 20-KEY EV-KIT
=====
| CH1 | CH11 | CH2 | CH12 |
|-----|
| CH10 | CH0 | CH3 | CH13 |
|-----|
| CH7 | CH18 | CH15 | CH4 |
|-----|
| CH19 | CH9 | CH5 | CH14 |
|-----|
| CH8 | CH17 | CH16 | CH6 |
|-----|
| Ultra Low Power |
=====

Type in a message to send to the serial port. Send as Text Send Ctrl + C
```