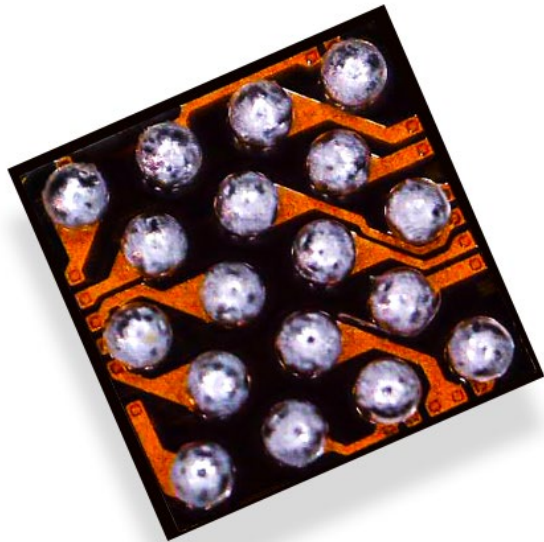


This time we were first

Pioneer in single chip, multi-sensor solutions.
Two decades of capacitive sensing and LED driver expertise.

MEET THE CHAMPION CHIP



MEET THE CHAMPION CHIP

The IQS7222A chip is the upgrade of Azoteq's IQS269A. The sensor fusion device is designed for applications that require multiple sensing capabilities from a single sensor IC. It offers capacitive, inductive and Hall-effect sensing in a single chip.

[IQS7222A >](#)

*Check out
the applications*





THE TOUCH BUTTON AND SLIDER

Add tap, tap and hold and swipe coordinate detection to true wireless stereo for play/pause and volume or track change.

THE FORCE SENSING

Force sensing happens when the user squeezes the housing of an earbud to produce a function. Our inductive coils can detect as little as $2\mu\text{m}$ deflection of the metal target.

[VIDEO >](#)



THE WATERPROOF BUTTON

Our sensor can contactlessly detect the movement of a metal object through the housing, allowing you to seal off all electronic components and mount a dome switch on the outside.

[VIDEO >](#)





THE WEAR DETECTION

Our capacitive sensor can detect whether earbuds are being worn - to automatically play/pause music to save power.

THE DOCKING DETECTION

Hall-effect sensing detects whether the charging case is open or closed and whether earbuds are docked to disable Bluetooth.

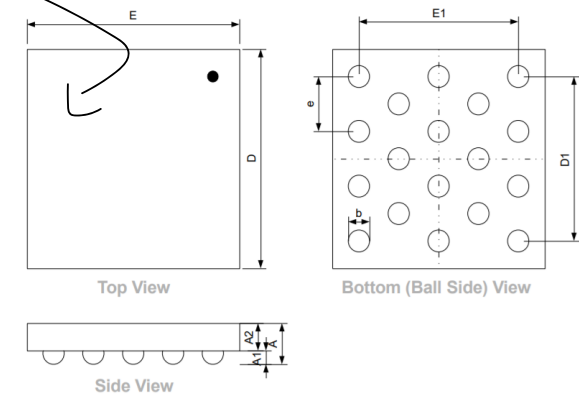


*Design them all with a
single chip*

THE SPECS

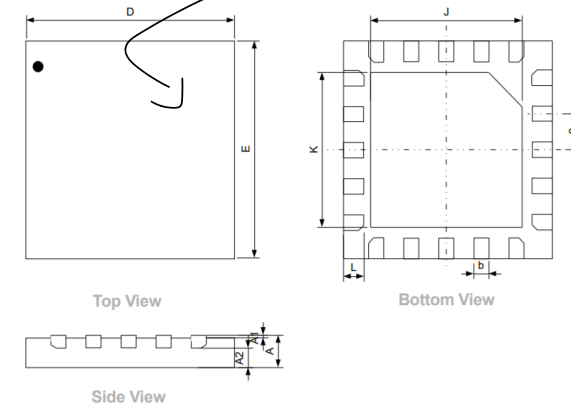
- > Highly flexible ProxFusion® device
- > 12 Sensor pad connections (QFN-20) / 10 sensor pad connections (WLCSP-18)
- > Configure up to 9 Channels using the external connections or internal sensor
- > External sensor options:
 - Up to 8 self capacitive touch / proximity sensors with additional distributed sensor pads
 - Up to 9 projected capacitive touch / proximity sensors
 - Up to 4 inductive sensor elements
- > Internal sensor option: Hall-effect switch
- > Customizable user interface due to programmable memory
- > Supply Voltage 1.8V(-5%)to 3.5V
- > Small packages
 - > WLCSP18 (1.62 x 1.62 x 0.5 mm)
 - > QFN20 (3.0 x 3.0 x 0.5 mm)

WLCSP18



Ask us about the different combinations we offer on a single chip!

QFN20



	Touch button	Slider	Force sensing	Waterproof button	Docking detection	Wear detection
Choose your own combination	?	?	?	?	?	?

[DATASHEET >](#)

THE EVALUATION KIT



[ORDER NOW >](#)

We would love to get in touch

Let us know what you have in mind.
We have a passion for designing new solutions for your
awesome tech.

[TALK TO US >](#)

THE OTHER CHIPS



The Appliance Chip



The Trackpad Chip



The Earbud Chip



The Keypad Chip



The WearMax™ Chip



The Wearable Chip



Azoteq

