



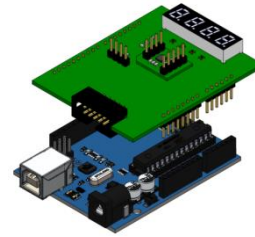
## IQS621EV01 Overview

Combination sensor with ambient light sensing (ALS), capacitive proximity/touch, Hall-effect sensor & inductive sensing capabilities

The IQS621 ProxFusion™ IC is a multifunctional, ambient light sensing (ALS), capacitance, Hall-effect & inductance sensor designed for applications where any or all of the technologies may be required. The IQS621 is an ultra-low power solution designed for short or long term activations through any of the sensing channels. The IQS621 is fully I2C compatible.

### EV-Kit Overview

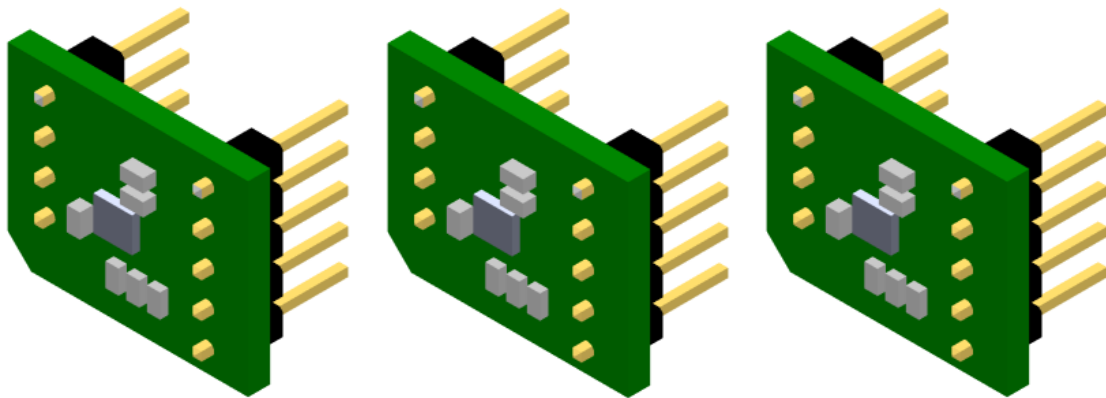
- Inductive sensing
- Hall-effect sensing
- Capacitive sensing
- Ambient light sensing (ALS)



### Evaluation Modes

- EV01 contains **3 x Modules**
- Embed the small module PCB (stamp) into custom design & interface to host MCU
- Plug into IQS621EV02 Shield board (sold separately)

**IQS621 Shield + Arduino Uno –  
sold separately**



**Detachable Stamp Module x 3**

### Applications

- Mobile electronics (phones/tablets)
- Home automation & lighting control
- White goods and appliances
- Wearable devices

- Human Interface Devices
- Aftermarket automotive<sup>1</sup>

<sup>1</sup> The part is not automotive qualified