



Quick-Start guide for the IQS227/8AS Evaluation Kit

Step 1: Insert a Module

- Insert a module into the main board.
- Check the Key!

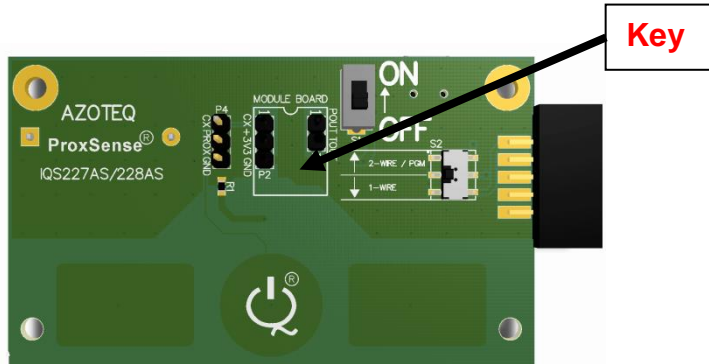


Figure 1.1 Main-board

Step 2: Choose Overlay(s)

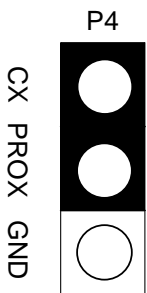
- Choose the correct number of overlay(s) for the chosen module board.
- Make sure it pushed flat on the PCB (removing any air-gaps)

Step 3: Power

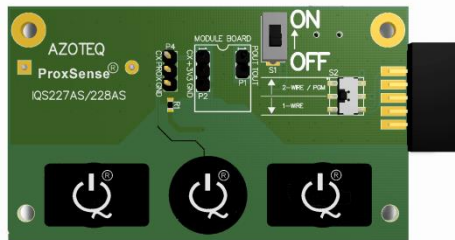
- Place two 3V coin-cell batteries in the battery terminal at the back.
- Move the Slide switch (S1) to the “ON” position.

Things to try

- Increase the CX surface area for increased proximity distance with a jumper on P4

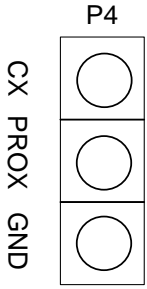


Power
Cycle!

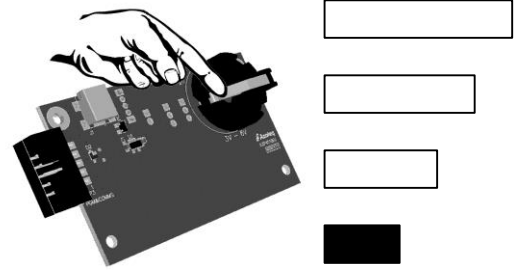
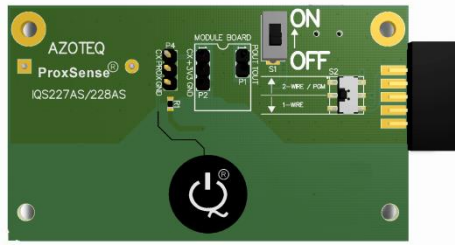




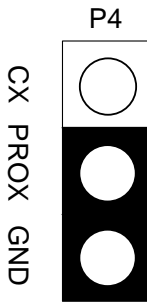
- Remove the jumper on P4 and touch the battery terminal.



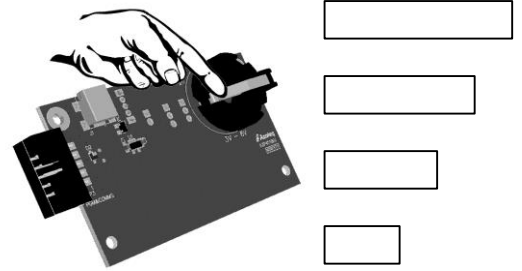
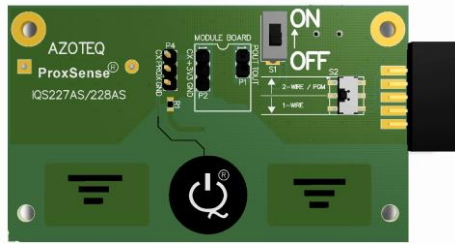
Power
Cycle!



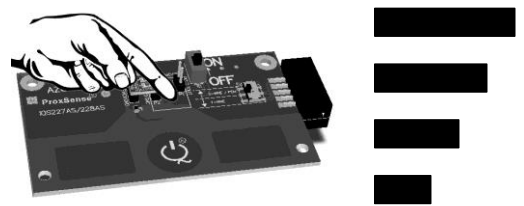
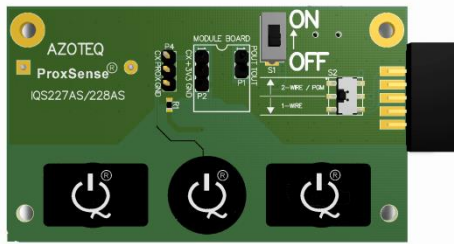
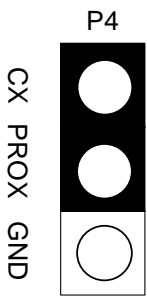
- Increase GND surface and touch on the battery terminal again.



Power
Cycle!



- Evaluate the increased proximity sensitivity by increasing the ground reference (connecting external ground from power supply or PC).



- Flip switch (S2) to the 2-wire option, to program new settings on the IC or stream data using the development GUI.

