



IQS622EV04 Overview

Combination sensor with ambient light sensing (ALS), active IR, Hall-effect and two-channel capacitive proximity/touch sensor

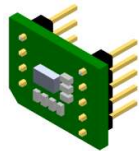
The IQS622 ProxFusion® IC is a multifunctional ambient light sensing (ALS), active IR, capacitance & Hall-effect sensor designed for applications where any or all of the technologies may be required. The IQS622 is an ultra-low power solution designed for short or long term activations through any of the sensing channels. The IQS622 is fully I²C compatible and can be configured to operate on an event mode basis to wake-up on dedicated sensors.

EV-Kit Overview

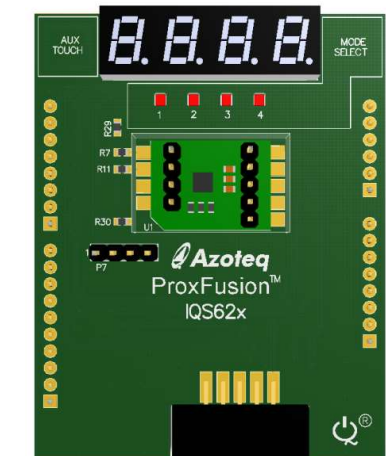
- Hall-effect sensing
- Capacitive sensing
- Ambient light sensing (ALS)
- Active IR proximity sensor

Evaluation Modes

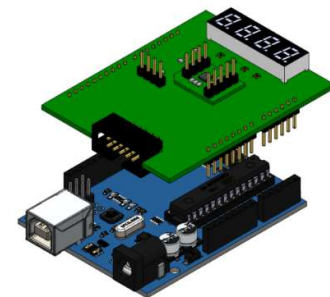
- Connect to PC GUI via CT210A USB Dongle (included)
- When connected to CT210A use 3.3V (default) only²
 - Raw info displayed in GUI
- Please ensure Shield Board³ is unplugged from Arduino Uno / ST Nucleo when connected to CT210A
- Plug into Arduino Uno¹ or ST Nucleo¹
 - Arduino operation described in IQS622EV03 user guide.
 - Sensor info displayed on 7-segment
 - Open source code for custom development
- Embed the small module PCB (stamp) into custom design & interface to host MCU
(Additional modules sold separately as IQS622EV01)



**Detachable
Stamp Module**



IQS622EV04 Shield Board



IQS622 Shield + Arduino Uno¹

Applications

- Laptops, Notebooks, Mobile phones, Tablets
- On-ear detection
- Screen brightness adjust
- Keyboard backlight adjust
- Smart cover detection and orientation
- SAR
- Touch volumes controls

¹ Sold separately

² 1.8V not supported on Shield Board due to diode protection

³ Shield board does not support programming