



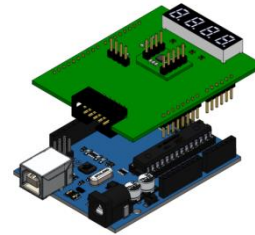
IQS622EV01 Overview

Combination sensor with ambient light sensing (ALS), active IR, Hall-effect and two-channel capacitive proximity/touch sensor

The IQS622 ProxFusion™ IC is a multifunctional ambient light sensing (ALS), active IR, capacitance & Hall-effect sensor designed for applications where any or all of the technologies may be required. The IQS622 is an ultra-low power solution designed for short or long term activations through any of the sensing channels. The IQS622 is fully I²C compatible and can be configured to operate on an event mode basis to wake-up on dedicated sensors.

EV-Kit Overview

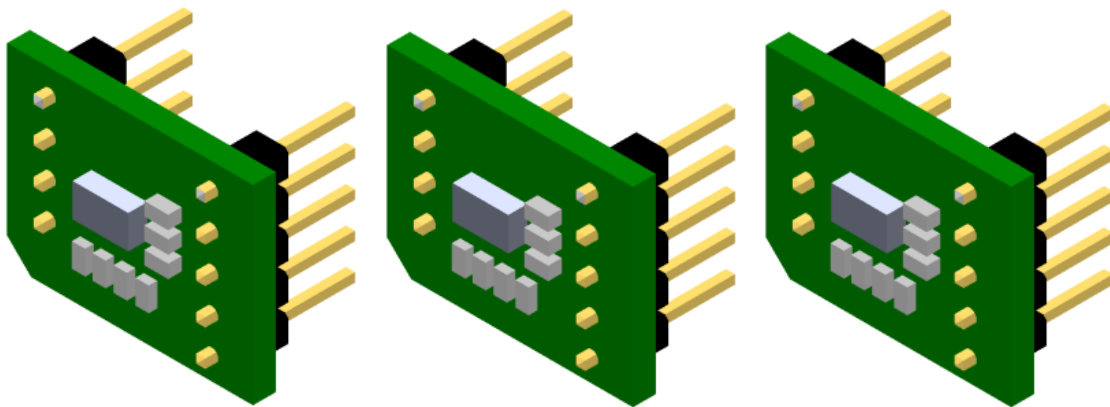
- Hall-effect sensing
- Capacitive sensing
- Ambient light sensing (ALS)
- Active IR proximity sensor



**IQS622 Shield + Arduino Uno –
sold separately**

Evaluation Modes

- EV01 contains **3 x Modules**
- Embed the small module PCB (stamp) into custom design & interface to host MCU
- Plug into IQS622EV02 Shield board (sold separately)



Detachable Stamp Module x 3

Applications

- **Laptops, Notebooks, Mobile phones, Tablets**
 - On-ear detection
 - Screen brightness adjust
 - Keyboard backlight adjust
 - Smart cover detection and orientation
 - SAR
 - Touch volumes controls